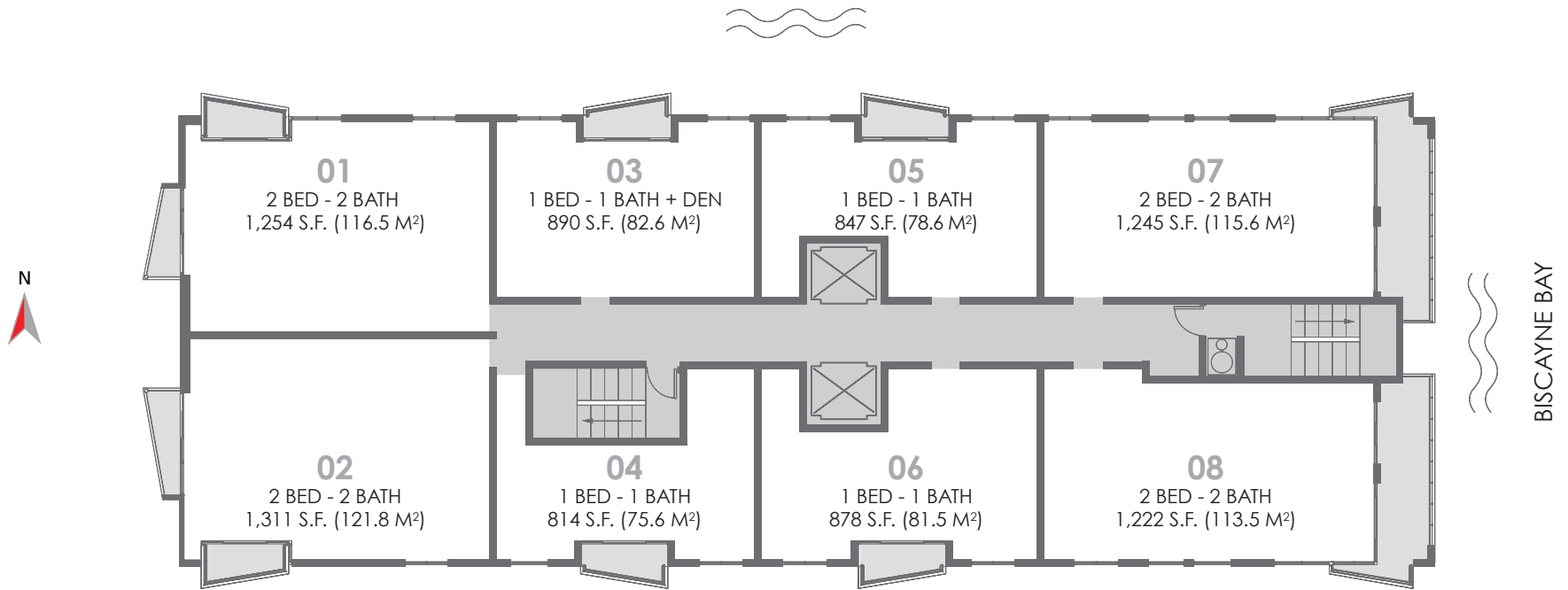


KEYPLAN



THE CRIMSON
WATERFRONT RESIDENCES

Stated dimensions are measured to the exterior boundaries of the exterior walls and the centerline of interior demising walls and in fact vary from the dimensions that would be determined by using the description and definition of the "unit" set forth in the declaration. All floor plans and development plans are approximate and subject to change.

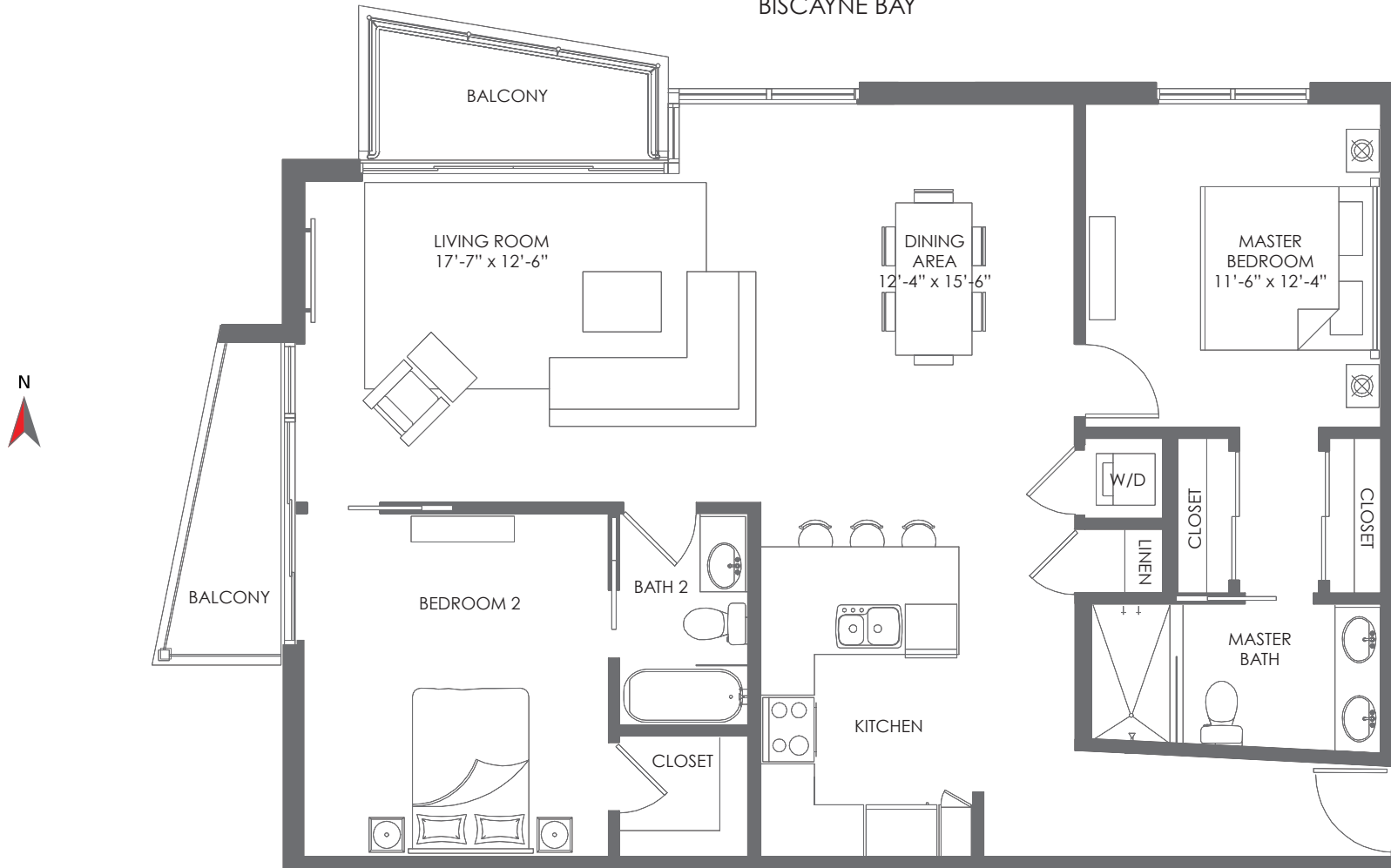


RESIDENCE
01

2 BEDROOMS / 2 BATHROOMS

A/C AREA	1,254 S.F. (116.5 M ²)
BALCONIES	100 S.F. (9.3 M ²)
TOTAL	1,354 S.F. (125.8 M ²)

BISCAYNE BAY



THE CRIMSON
WATERFRONT RESIDENCES

Stated dimensions are measured to the exterior boundaries of the exterior walls and the centerline of interior demising walls and in fact vary from the dimensions that would be determined by using the description and definition of the "unit" set forth in the declaration. All floor plans and development plans are approximate and subject to change



FLOORS
9 TO 18



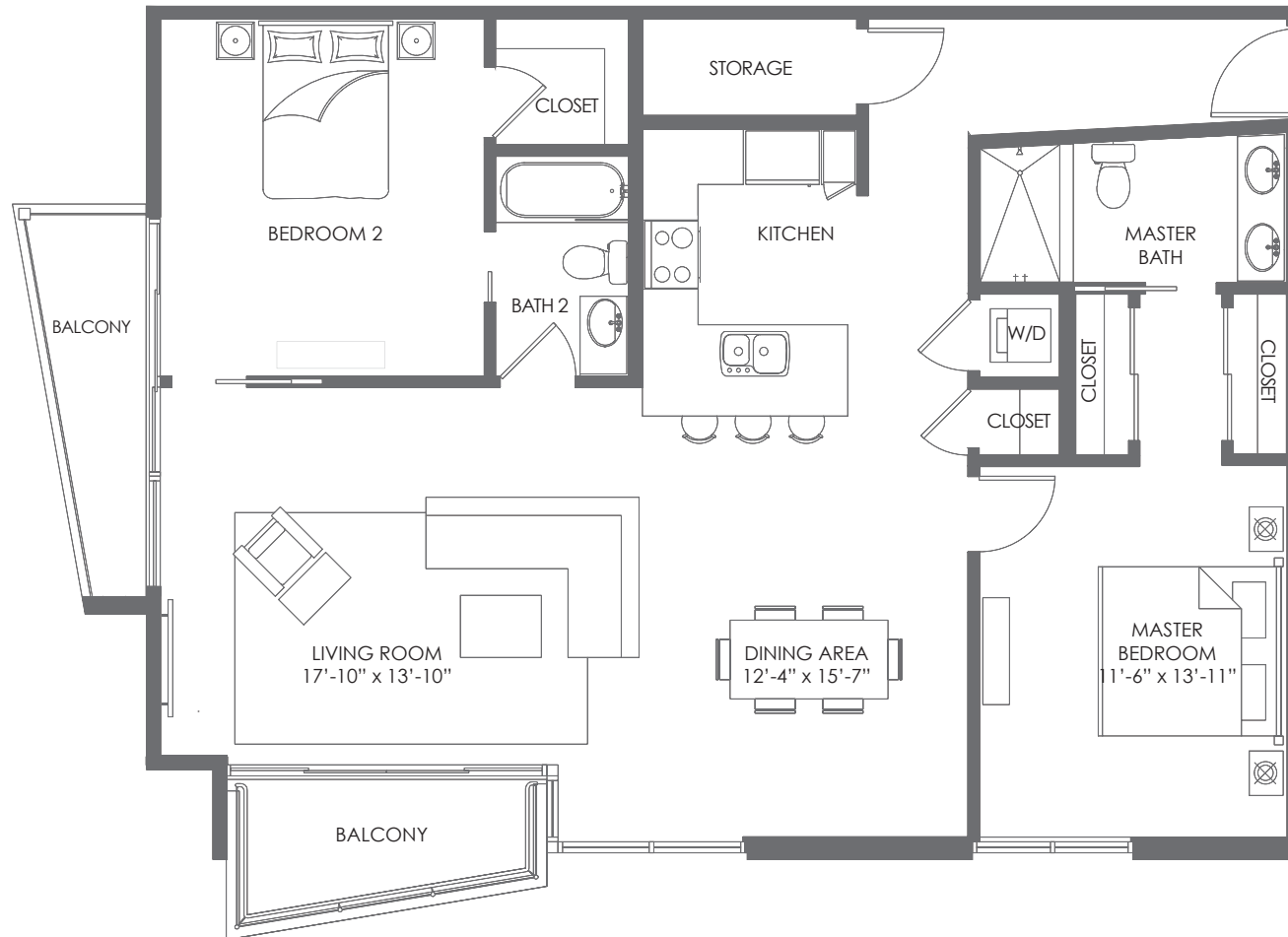
BISCAYNE
BAY

WWW.CRIMSONMIAMI.COM

RESIDENCE
02

2 BEDROOMS / 2 BATHROOMS

A/C AREA	1,311 S.F. (121.8 M ²)
BALCONIES	105 S.F. (9.8 M ²)
TOTAL	1,416 S.F. (131.6 M ²)



THE CRIMSON
WATERFRONT RESIDENCES

Stated dimensions are measured to the exterior boundaries of the exterior walls and the centerline of interior demising walls and in fact vary from the dimensions that would be determined by using the description and definition of the "unit" set forth in the declaration. All floor plans and development plans are approximate and subject to change



FLOORS
9 TO 18



BISCAYNE
BAY

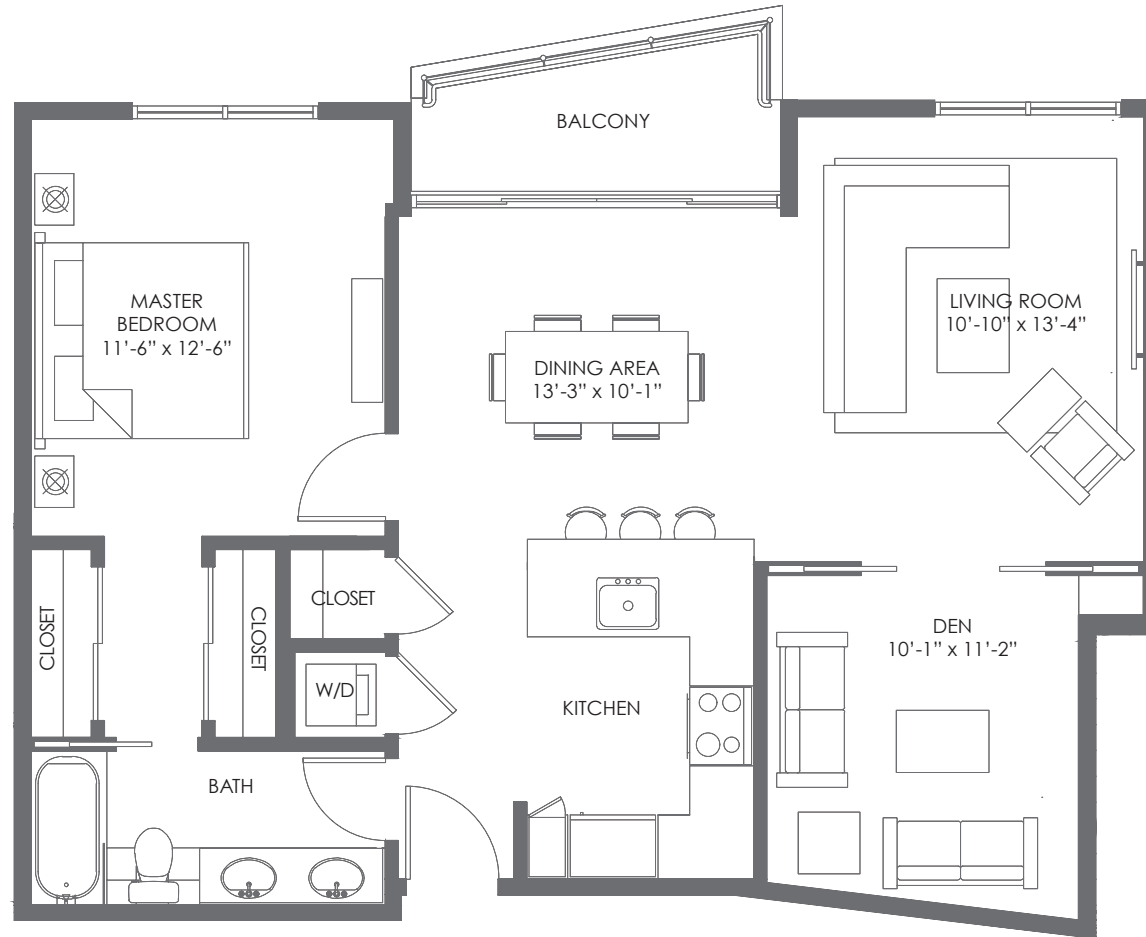
WWW.CRIMSONMIAMI.COM

RESIDENCE
03

1 BEDROOM / 1 BATHROOM + DEN

A/C AREA	890 S.F. (82.6 M ²)
BALCONIES	60 S.F. (5.5 M ²)
TOTAL	950 S.F. (88.1 M ²)

BISCAYNE BAY



THE CRIMSON
WATERFRONT RESIDENCES

Stated dimensions are measured to the exterior boundaries of the exterior walls and the centerline of interior demising walls and in fact vary from the dimensions that would be determined by using the description and definition of the "unit" set forth in the declaration. All floor plans and development plans are approximate and subject to change



FLOORS
8 TO 18



BISCAYNE
BAY

WWW.CRIMSONMIAMI.COM

RESIDENCE
04

1 BEDROOM / 1 BATHROOM

FLOORS 8-14

FLOORS 15-18

A/C AREA

807 S.F. (74.9 M²)

814 S.F. (75.6 M²)

BALCONIES

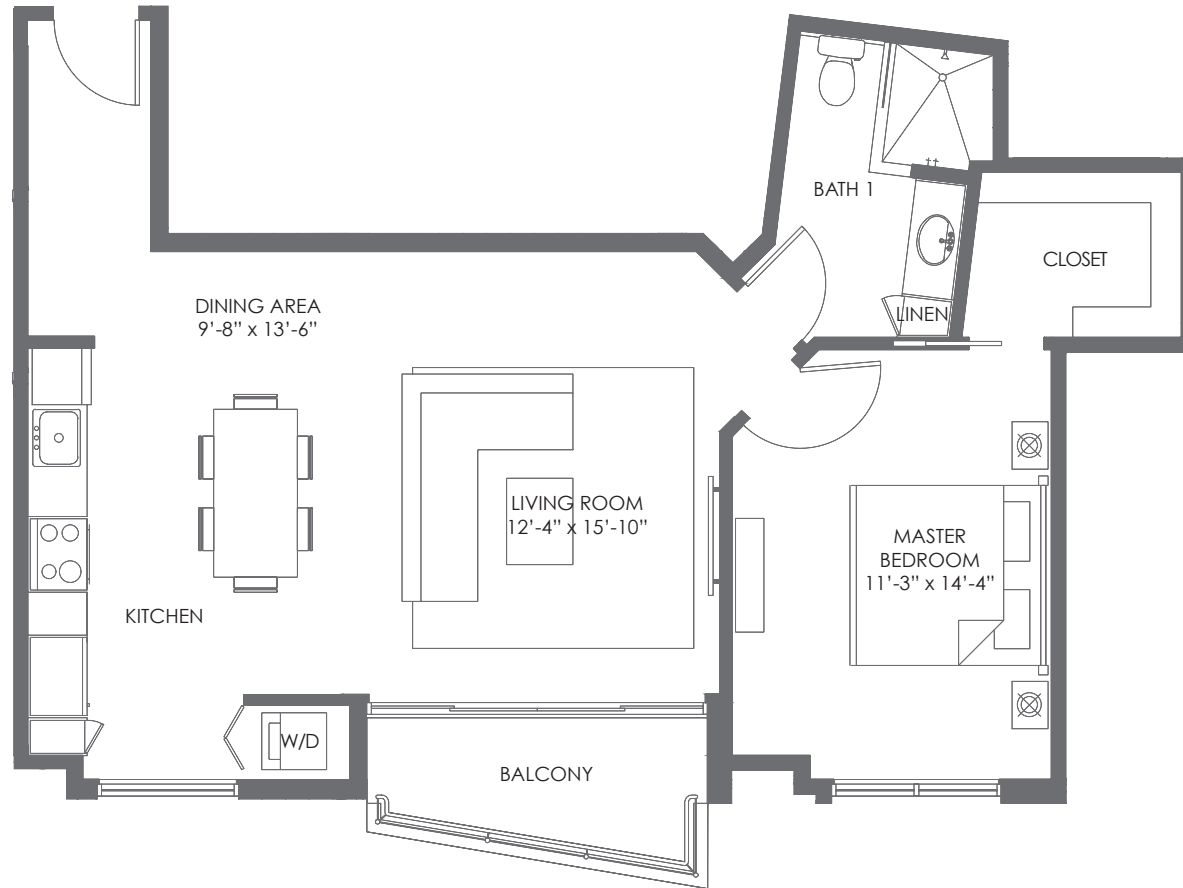
60 S.F. (5.5 M²)

60 S.F. (5.5 M²)

TOTAL

867 S.F. (80.4 M²)

874 S.F. (81.1 M²)



THE CRIMSON
WATERFRONT RESIDENCES

Stated dimensions are measured to the exterior boundaries of the exterior walls and the centerline of interior demising walls and in fact vary from the dimensions that would be determined by using the description and definition of the "unit" set forth in the declaration. All floor plans and development plans are approximate and subject to change



FLOORS
8 TO 18



BISCAYNE
BAY

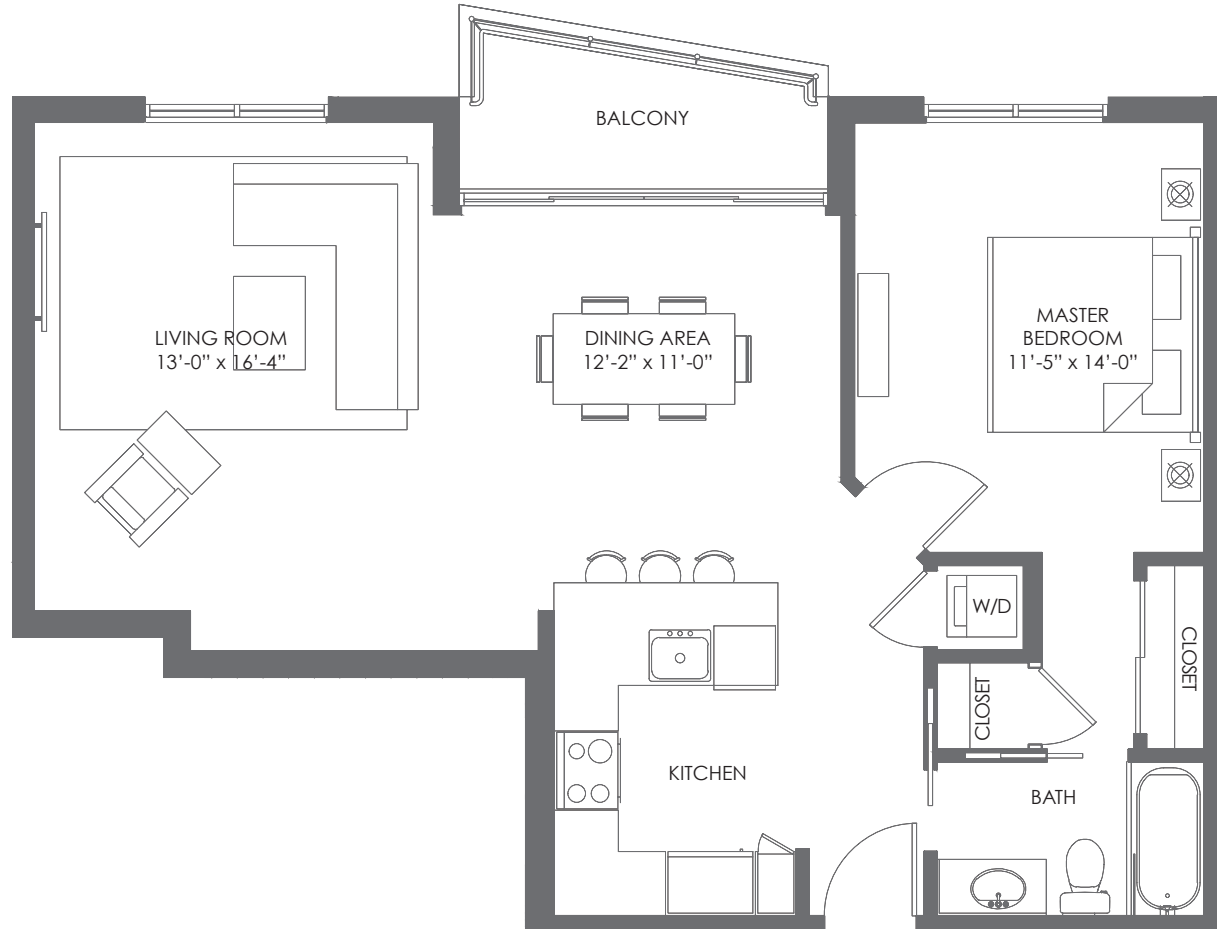
WWW.CRIMSONMIAMI.COM

RESIDENCE
05

1 BEDROOM / 1 BATHROOM

A/C AREA	847 S.F. (78.6 M ²)
BALCONIES	60 S.F. (5.5 M ²)
TOTAL	907 S.F. (84.1 M ²)

BISCAYNE BAY



THE CRIMSON
WATERFRONT RESIDENCES

Stated dimensions are measured to the exterior boundaries of the exterior walls and the centerline of interior demising walls and in fact vary from the dimensions that would be determined by using the description and definition of the "unit" set forth in the declaration. All floor plans and development plans are approximate and subject to change



FLOORS
8 TO 18



BISCAYNE
BAY

WWW.CRIMSONMIAMI.COM

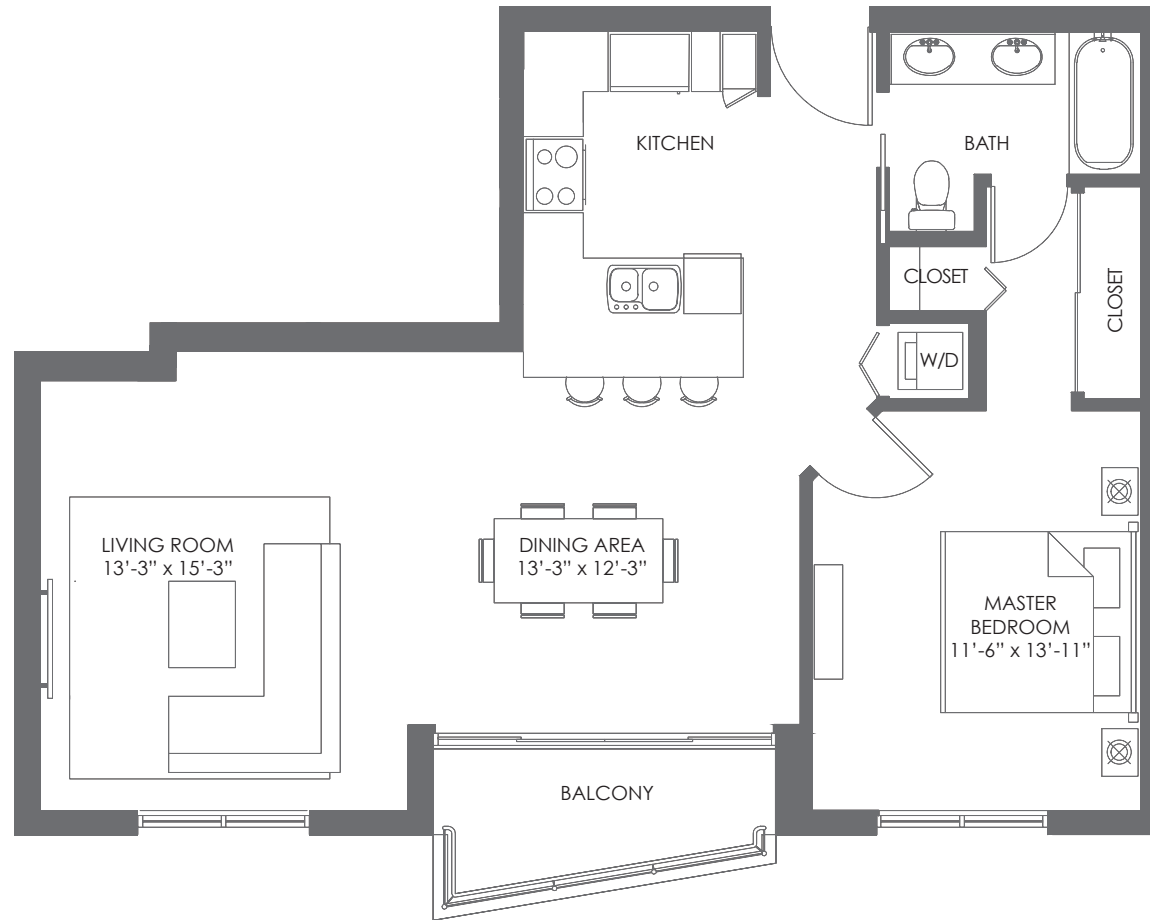
RESIDENCE
06

1 BEDROOM / 1 BATHROOM

FLOORS 9-14

FLOORS 15-18

A/C AREA	867 S.F. (80.5 M ²)	878 S.F. (81.5 M ²)
BALCONIES	60 S.F. (5.5 M ²)	60 S.F. (5.5 M ²)
TOTAL	927 S.F. (86 M ²)	938 S.F. (87 M ²)



THE CRIMSON
WATERFRONT RESIDENCES

Stated dimensions are measured to the exterior boundaries of the exterior walls and the centerline of interior demising walls and in fact vary from the dimensions that would be determined by using the description and definition of the "unit" set forth in the declaration. All floor plans and development plans are approximate and subject to change



FLOORS
9 TO 18



BISCAYNE
BAY

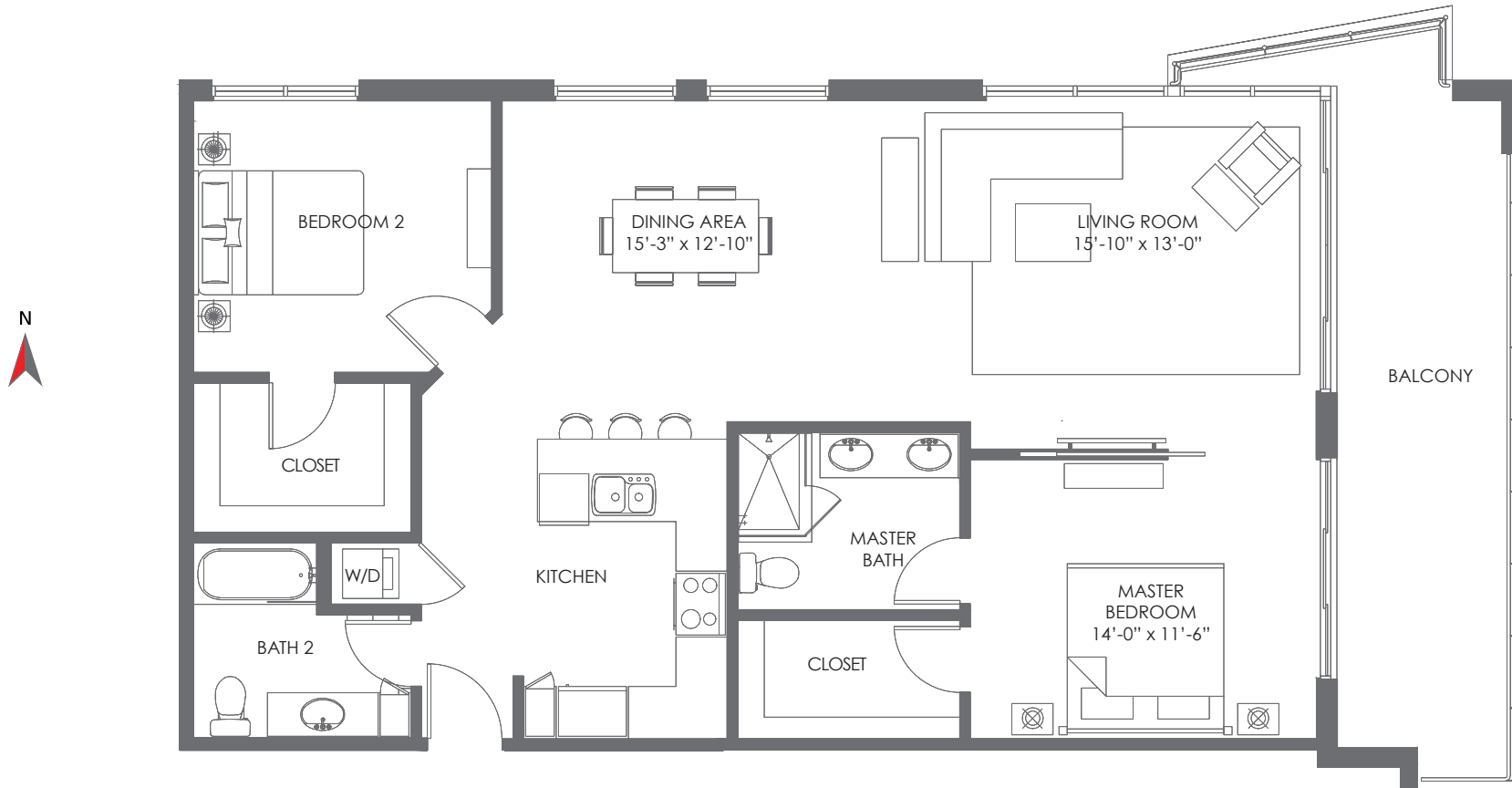
WWW.CRIMSONMIAMI.COM

RESIDENCE
07

2 BEDROOMS / 2 BATHROOMS

A/C AREA	1,245 S.F. (115.6 M ²)
BALCONIES	221 S.F. (20.5 M ²)
TOTAL	1,466 S.F. (136 M²)

BISCAYNE BAY



THE CRIMSON
WATERFRONT RESIDENCES

Stated dimensions are measured to the exterior boundaries of the exterior walls and the centerline of interior demising walls and in fact vary from the dimensions that would be determined by using the description and definition of the "unit" set forth in the declaration. All floor plans and development plans are approximate and subject to change



FLOORS
8 TO 18



BISCAYNE
BAY

WWW.CRIMSONMIAMI.COM

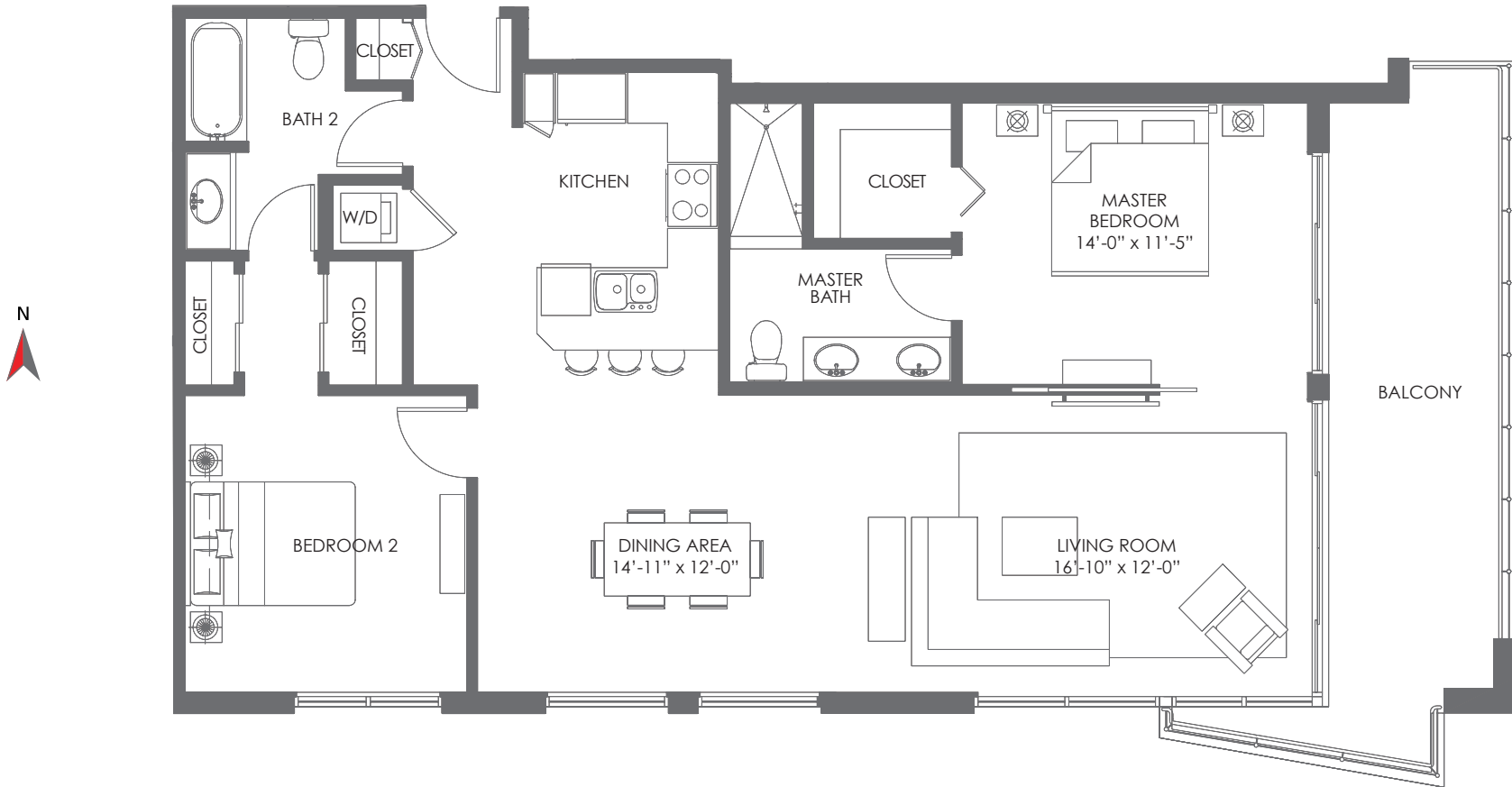
RESIDENCE
08

2 BEDROOMS / 2 BATHROOMS

FLOORS 9-14

FLOORS 15-18

A/C AREA	1,210 S.F. (112.4 M ²)	1,222 S.F. (113.5 M ²)
BALCONIES	211 S.F. (19.6 M ²)	208 S.F. (19.3 M ²)
TOTAL	1,421 S.F. (132 M ²)	1,430 S.F. (132.8 M ²)



THE CRIMSON
WATERFRONT RESIDENCES

Stated dimensions are measured to the exterior boundaries of the exterior walls and the centerline of interior demising walls and in fact vary from the dimensions that would be determined by using the description and definition of the "unit" set forth in the declaration. All floor plans and development plans are approximate and subject to change



FLOORS
9 TO 18



BISCAYNE
BAY

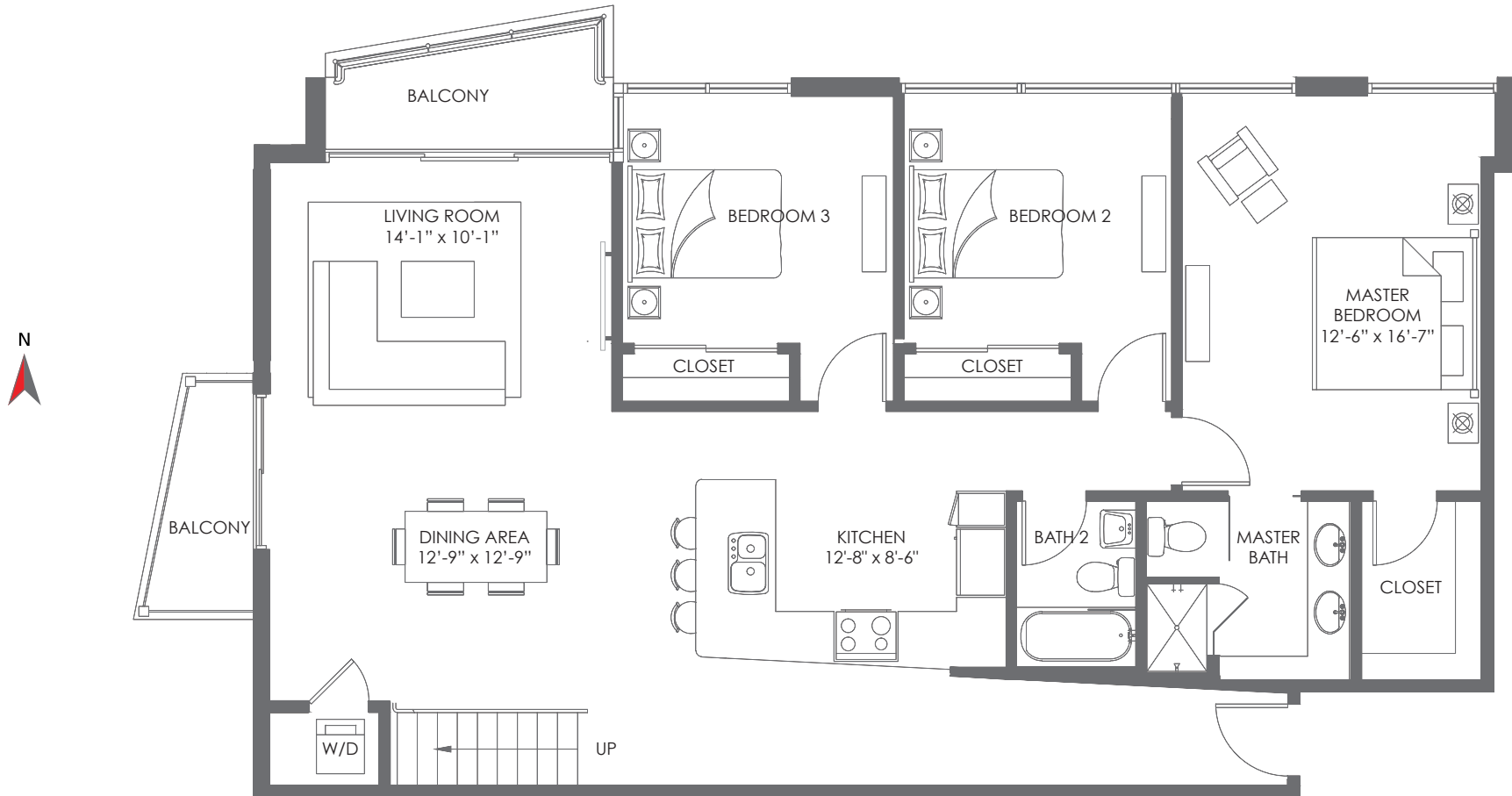
WWW.CRIMSONMIAMI.COM

PENTHOUSE
01

3 BEDROOMS / 2 BATHROOMS

A/C AREA	1,625 S.F. (150.9 M ²)
BALCONIES	100 S.F. (9.2 M ²)
ROOF TERRACE	983 S.F. (91.3 M ²)
TOTAL	2,708 S.F. (251.4 M ²)

BISCAYNE BAY

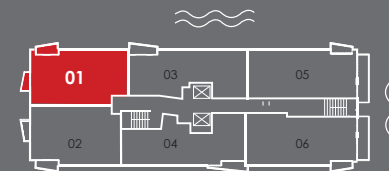


THE CRIMSON
WATERFRONT RESIDENCES

Stated dimensions are measured to the exterior boundaries of the exterior walls and the centerline of interior demising walls and in fact vary from the dimensions that would be determined by using the description and definition of the "unit" set forth in the declaration. All floor plans and development plans are approximate and subject to change



PENTHOUSES
19TH FLOOR



BISCAYNE
BAY

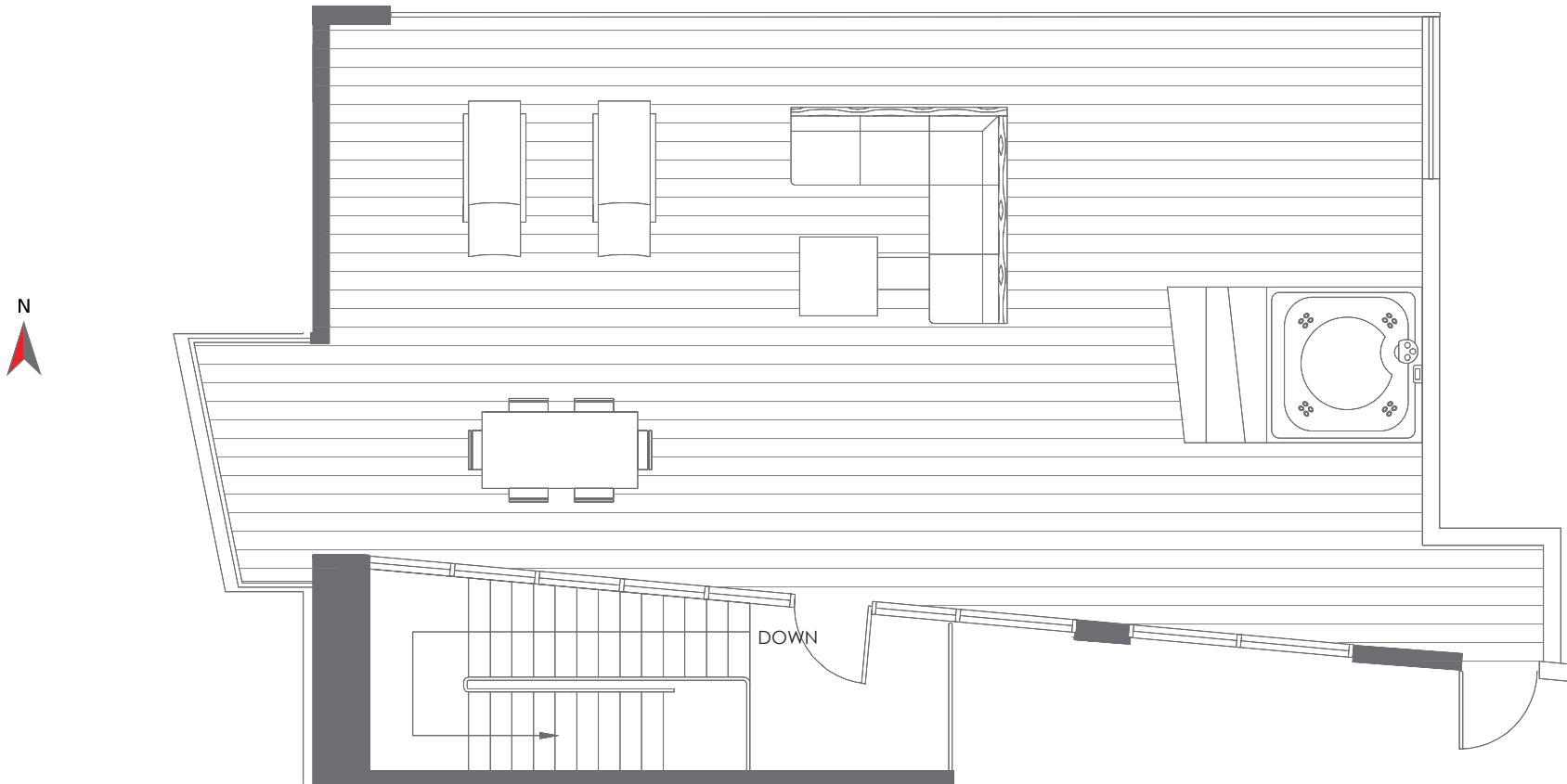
WWW.CRIMSONMIAMI.COM

PENTHOUSE
01

ROOF TERRACE

A/C AREA	1,625 S.F. (150.9 M ²)
BALCONIES	100 S.F. (9.2 M ²)
ROOF TERRACE	983 S.F. (91.3 M ²)
TOTAL	2,708 S.F. (251.4 M ²)

BISCAYNE BAY

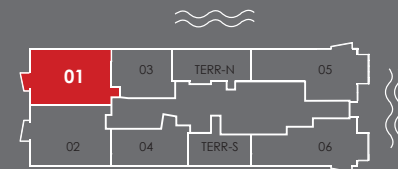


THE CRIMSON
WATERFRONT RESIDENCES

Stated dimensions are measured to the exterior boundaries of the exterior walls and the centerline of interior demising walls and in fact vary from the dimensions that would be determined by using the description and definition of the "unit" set forth in the declaration. All floor plans and development plans are approximate and subject to change



PENTHOUSES
20TH FLOOR



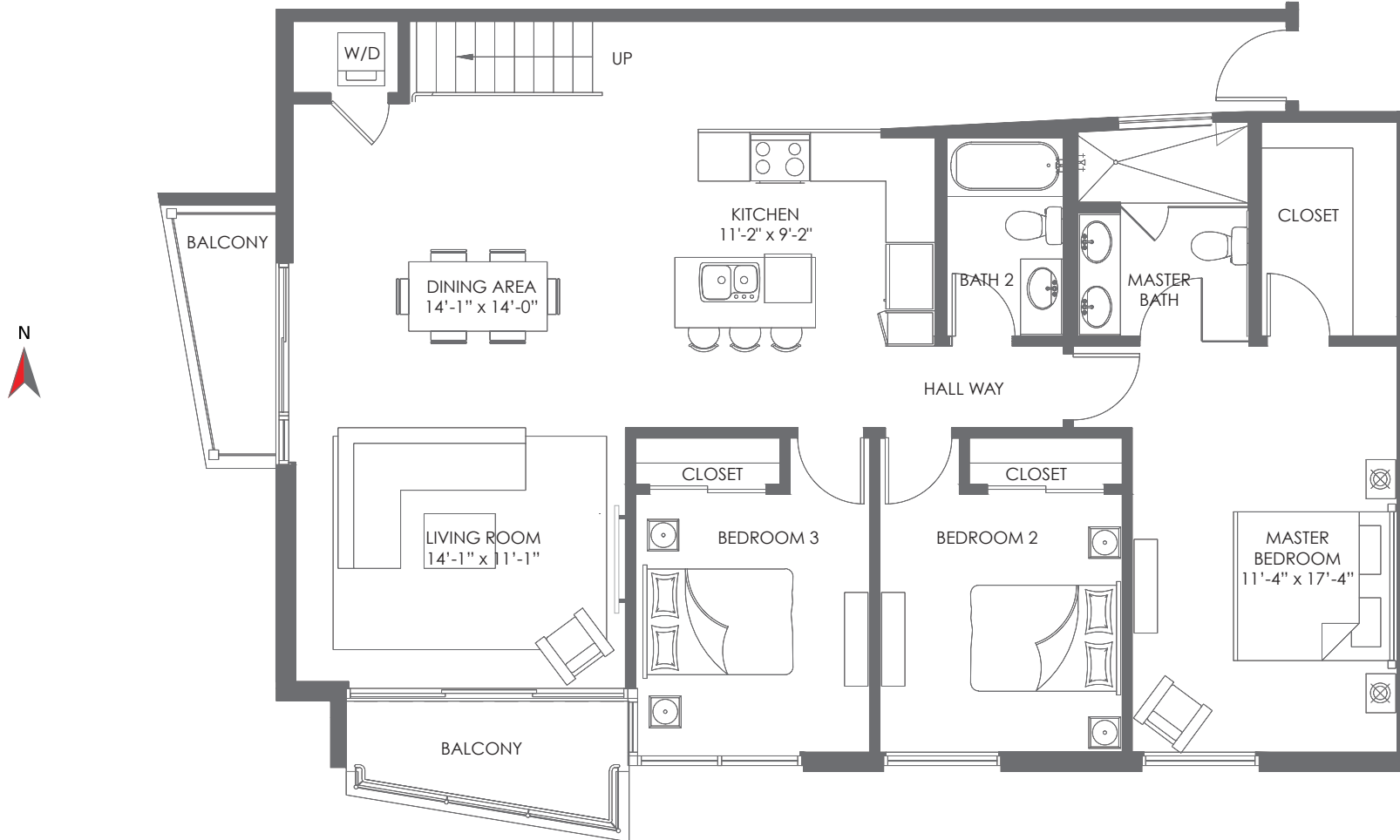
BISCAYNE
BAY

WWW.CRIMSONMIAMI.COM

PENTHOUSE
02

3 BEDROOMS / 2 BATHROOMS

A/C AREA	1,651 S.F. (153.3 M ²)
BALCONIES	106 S.F. (9.7 M ²)
ROOF TERRACE	1,077 S.F. (100 M ²)
TOTAL	2,834 S.F. (263 M ²)

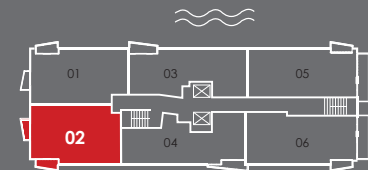


THE CRIMSON
WATERFRONT RESIDENCES

Stated dimensions are measured to the exterior boundaries of the exterior walls and the centerline of interior demising walls and in fact vary from the dimensions that would be determined by using the description and definition of the "unit" set forth in the declaration. All floor plans and development plans are approximate and subject to change



PENTHOUSES
19TH FLOOR



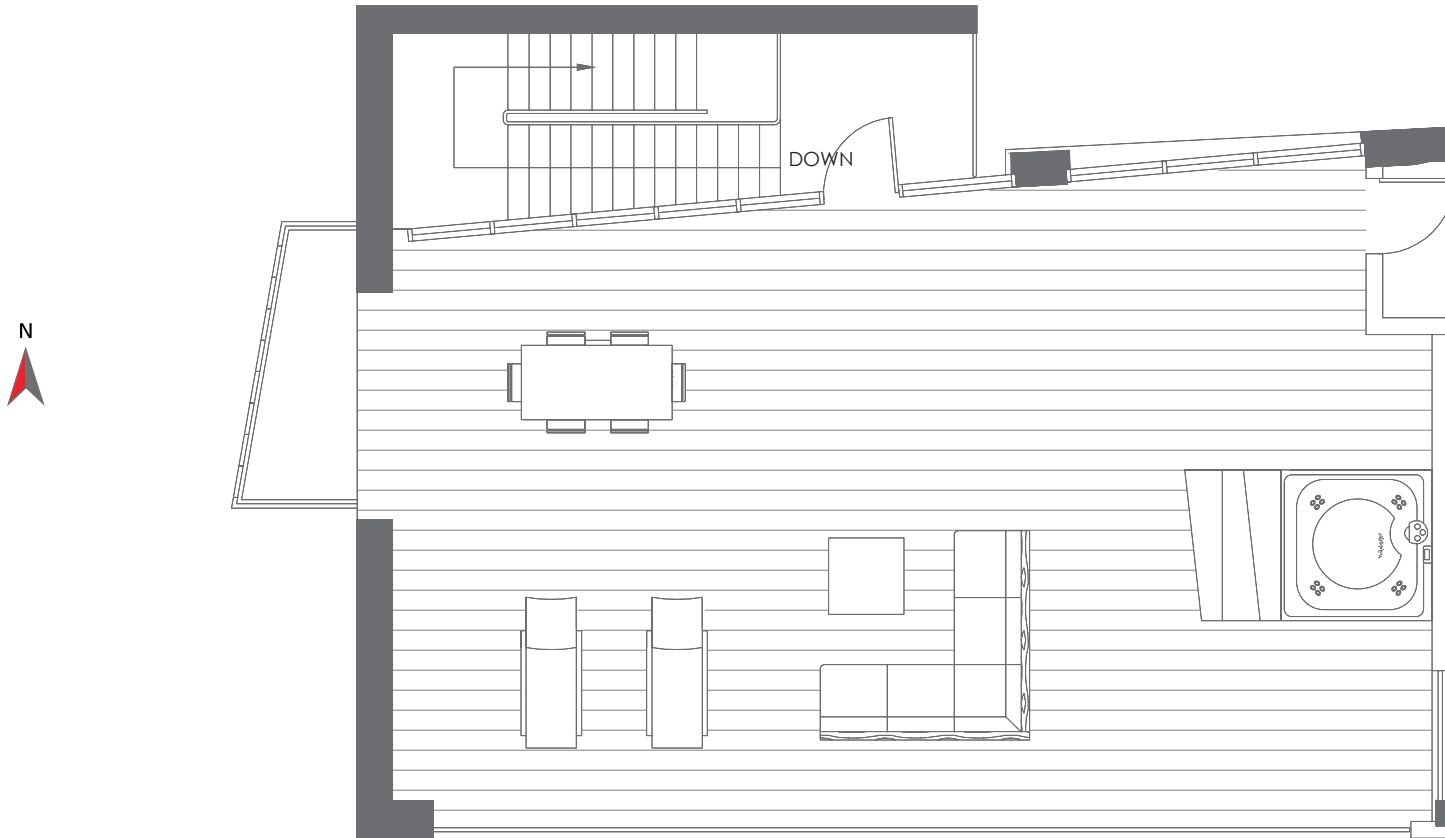
BISCAYNE
BAY

WWW.CRIMSONMIAMI.COM

PENTHOUSE
02

ROOF TERRACE

A/C AREA	1,651 S.F. (153.3 M ²)
BALCONIES	106 S.F. (9.7 M ²)
ROOF TERRACE	1,077 S.F. (100 M ²)
TOTAL	2,834 S.F. (263 M ²)

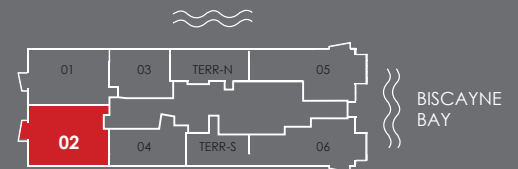


THE CRIMSON
WATERFRONT RESIDENCES

Stated dimensions are measured to the exterior boundaries of the exterior walls and the centerline of interior demising walls and in fact vary from the dimensions that would be determined by using the description and definition of the "unit" set forth in the declaration. All floor plans and development plans are approximate and subject to change



PENTHOUSES
20TH FLOOR



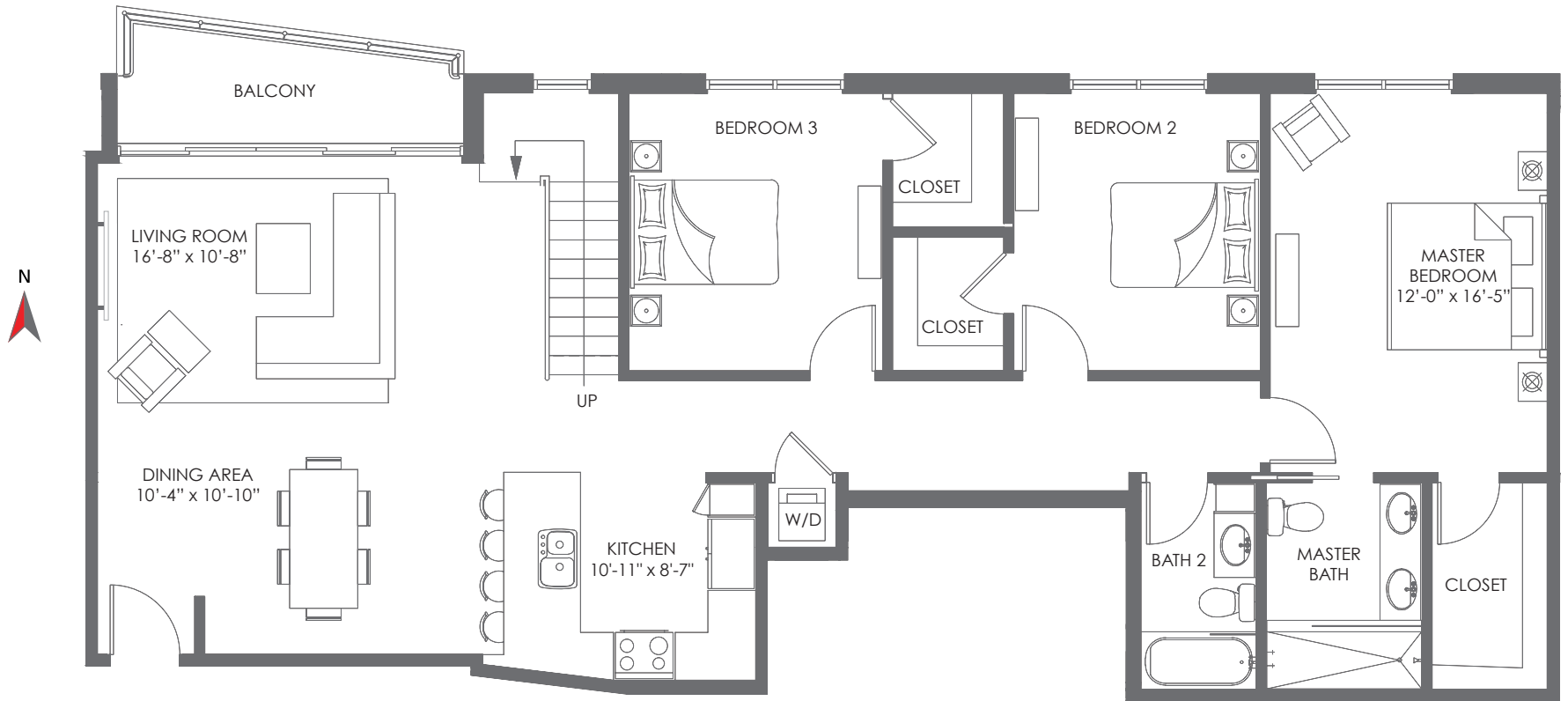
WWW.CRIMSONMIAMI.COM

PENTHOUSE
03

3 BEDROOMS / 2 BATHROOMS

A/C AREA	1,606 S.F. (149.2 M ²)
BALCONIES	78 S.F. (7.2 M ²)
ROOF TERRACE	664 S.F. (61.7 M ²)
TOTAL	2,348 S.F. (218.1 M ²)

BISCAYNE BAY

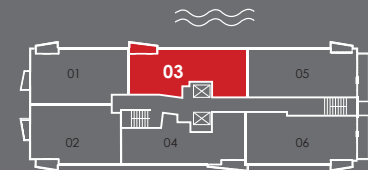


THE CRIMSON
WATERFRONT RESIDENCES

Stated dimensions are measured to the exterior boundaries of the exterior walls and the centerline of interior demising walls and in fact vary from the dimensions that would be determined by using the description and definition of the "unit" set forth in the declaration. All floor plans and development plans are approximate and subject to change



PENTHOUSES
19TH FLOOR



BISCAYNE
BAY

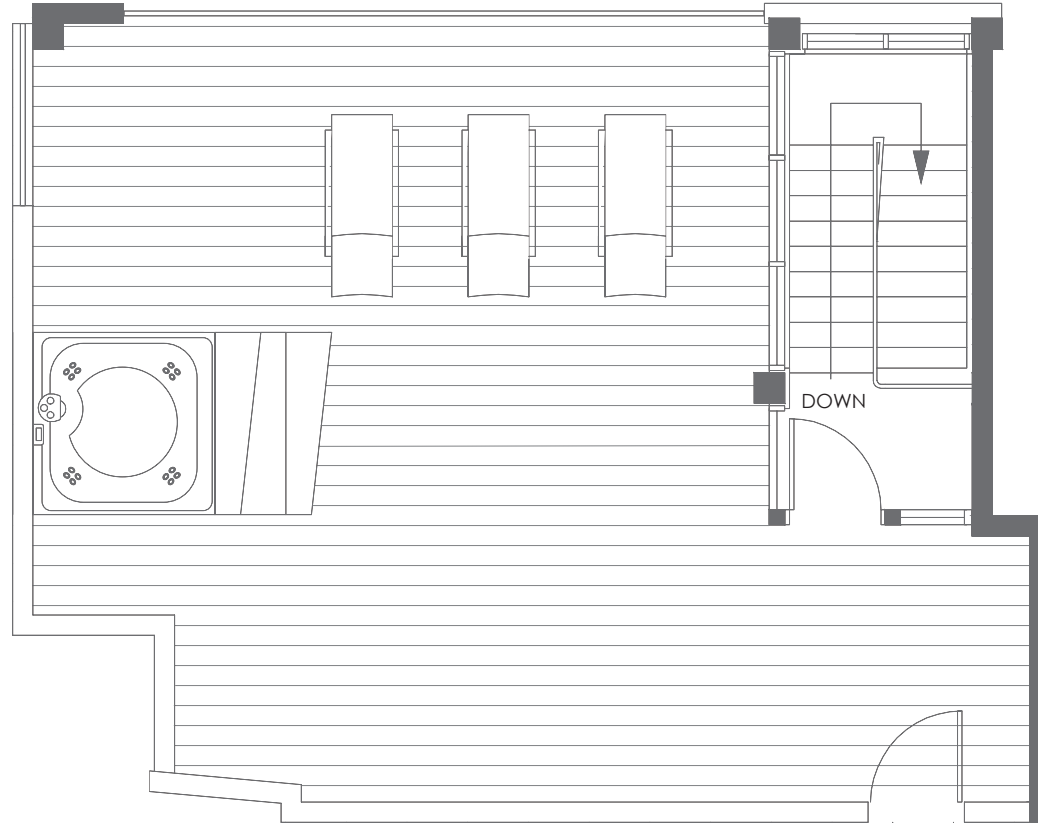
WWW.CRIMSONMIAMI.COM

PENTHOUSE
03

ROOF TERRACE

A/C AREA	1,606 S.F. (149.2 M ²)
BALCONIES	78 S.F. (7.2 M ²)
ROOF TERRACE	664 S.F. (61.7 M ²)
TOTAL	2,348 S.F. (218.1 M ²)

BISCAYNE BAY

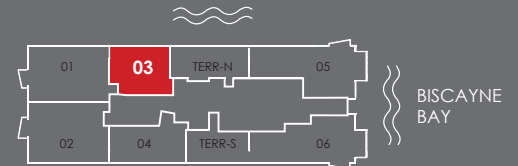


THE CRIMSON
WATERFRONT RESIDENCES

Stated dimensions are measured to the exterior boundaries of the exterior walls and the centerline of interior demising walls and in fact vary from the dimensions that would be determined by using the description and definition of the "unit" set forth in the declaration. All floor plans and development plans are approximate and subject to change



PENTHOUSES
20TH FLOOR

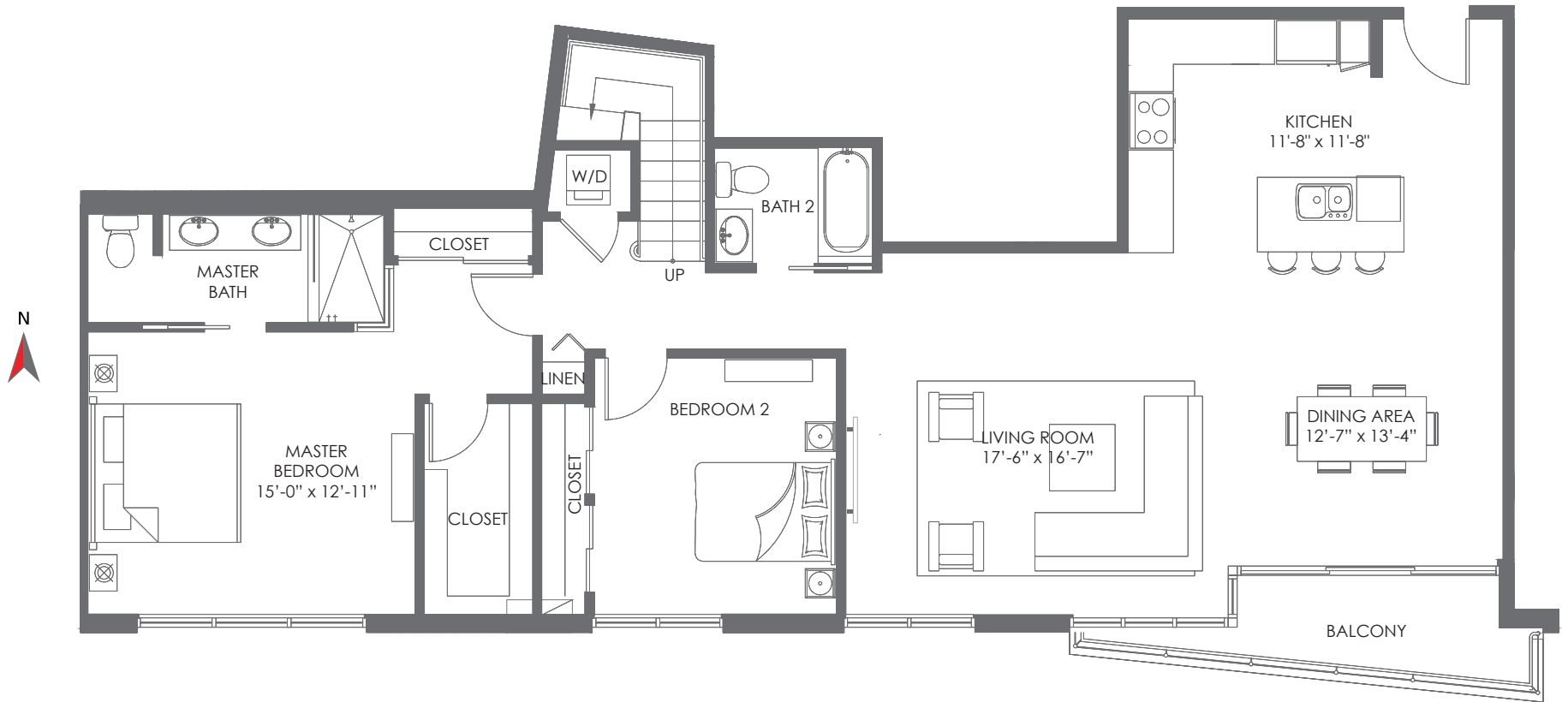


WWW.CRIMSONMIAMI.COM

PENTHOUSE
04

2 BEDROOMS / 2 BATHROOMS

A/C AREA	1,578 S.F. (146.6 M ²)
BALCONIES	79 S.F. (7.3 M ²)
ROOF TERRACE	688 S.F. (63.9 M ²)
TOTAL	2,345 S.F. (217.8 M ²)



THE CRIMSON
WATERFRONT RESIDENCES

Stated dimensions are measured to the exterior boundaries of the exterior walls and the centerline of interior demising walls and in fact vary from the dimensions that would be determined by using the description and definition of the "unit" set forth in the declaration. All floor plans and development plans are approximate and subject to change



PENTHOUSES
19TH FLOOR

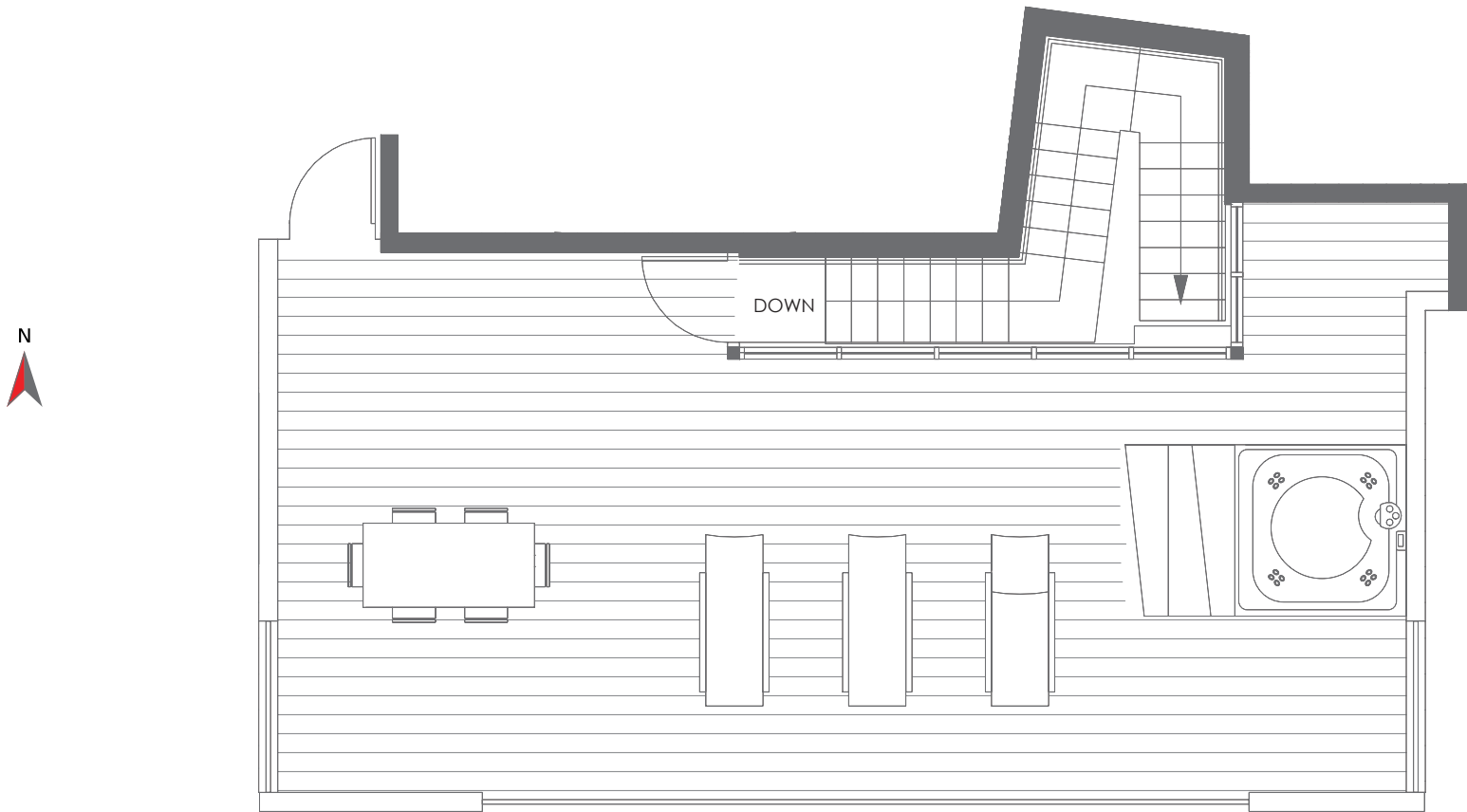


WWW.CRIMSONMIAMI.COM

PENTHOUSE
04

ROOF TERRACE

A/C AREA	1,578 S.F. (146.6 M ²)
BALCONIES	79 S.F. (7.3 M ²)
ROOF TERRACE	688 S.F. (63.9 M ²)
TOTAL	2,345 S.F. (217.8 M ²)

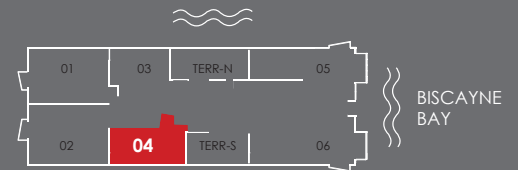


THE CRIMSON
WATERFRONT RESIDENCES

Stated dimensions are measured to the exterior boundaries of the exterior walls and the centerline of interior demising walls and in fact vary from the dimensions that would be determined by using the description and definition of the "unit" set forth in the declaration. All floor plans and development plans are approximate and subject to change



PENTHOUSES
20TH FLOOR



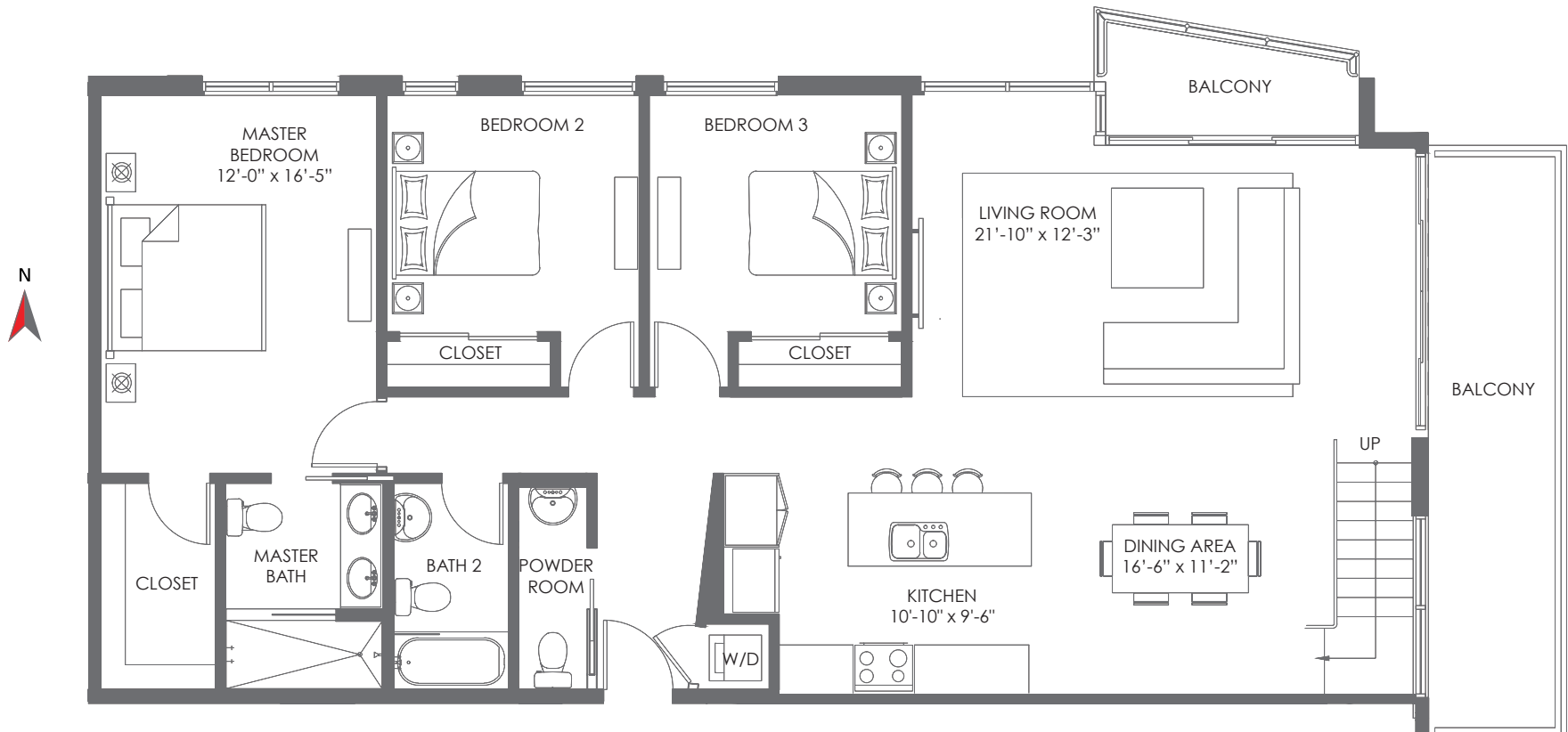
WWW.CRIMSONMIAMI.COM

PENTHOUSE
05

3 BEDROOMS / 2 BATHROOMS

A/C AREA	1,668 S.F. (154.9 M ²)
BALCONIES	205 S.F. (19 M ²)
ROOF TERRACE	1,123 S.F. (104.3 M ²)
TOTAL	2,996 S.F. (278.2 M ²)

BISCAYNE BAY

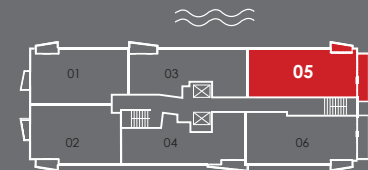


THE CRIMSON
WATERFRONT RESIDENCES

Stated dimensions are measured to the exterior boundaries of the exterior walls and the centerline of interior demising walls and in fact vary from the dimensions that would be determined by using the description and definition of the "unit" set forth in the declaration. All floor plans and development plans are approximate and subject to change



PENTHOUSES
19TH FLOOR



BISCAYNE
BAY

WWW.CRIMSONMIAMI.COM

PENTHOUSE
05

ROOF TERRACE

A/C AREA	1,606 S.F. (149.2 M ²)
BALCONIES	78 S.F. (7.2 M ²)
ROOF TERRACE	664 S.F. (61.7 M ²)
TOTAL	2,348 S.F. (218.1 M ²)

BISCAYNE BAY

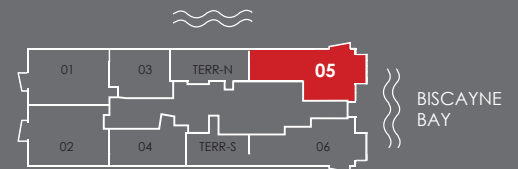


THE CRIMSON
WATERFRONT RESIDENCES

Stated dimensions are measured to the exterior boundaries of the exterior walls and the centerline of interior demising walls and in fact vary from the dimensions that would be determined by using the description and definition of the "unit" set forth in the declaration. All floor plans and development plans are approximate and subject to change



PENTHOUSES
20TH FLOOR



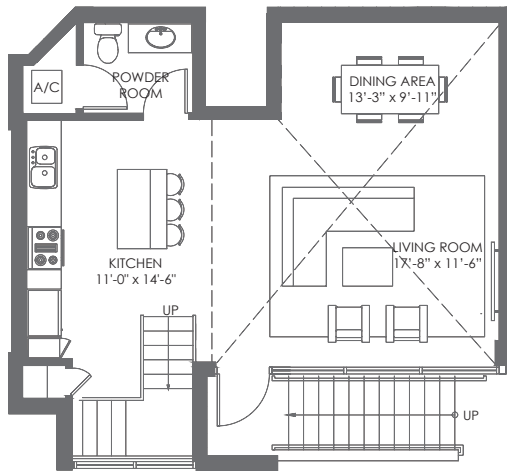
WWW.CRIMSONMIAMI.COM

TOWNHOME
01

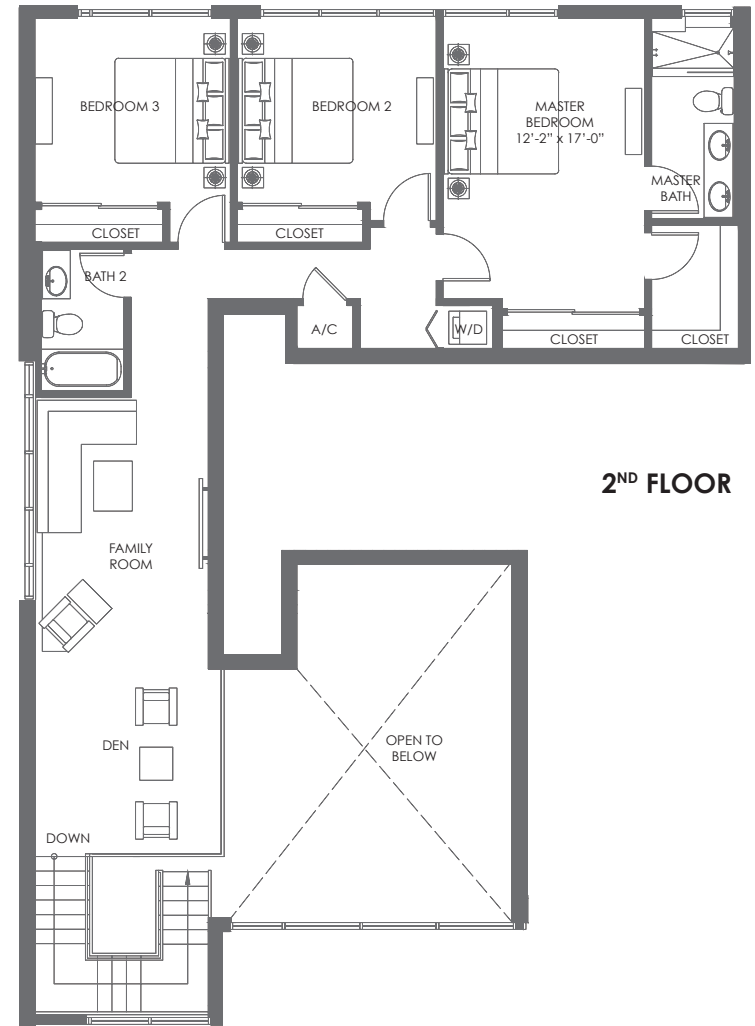
3 BEDROOMS / 2 1/2 BATHROOMS

BISCAYNE BAY

1ST FLOOR	671 S.F. (62.3 M ²)
2ND FLOOR	1,339 S.F. (124.4 M ²)
TOTAL	2,010 S.F. (186.7 M ²)



1ST FLOOR



2ND FLOOR



THE CRIMSON
WATERFRONT RESIDENCES

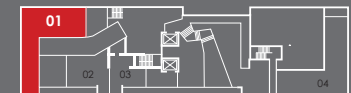
WWW.CRIMSONMIAMI.COM



TOWNHOMES



1ST FLOOR



2ND FLOOR

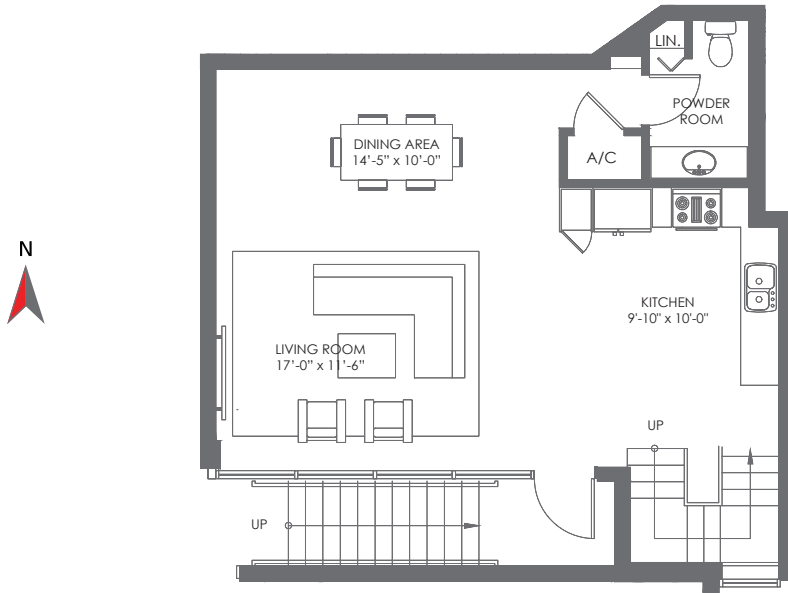
BISCAYNE
BAY

Stated dimensions are measured to the exterior boundaries of the exterior walls and the centerline of interior demising walls and in fact vary from the dimensions that would be determined by using the description and definition of the "unit" set forth in the declaration. All floor plans and development plans are approximate and subject to change.

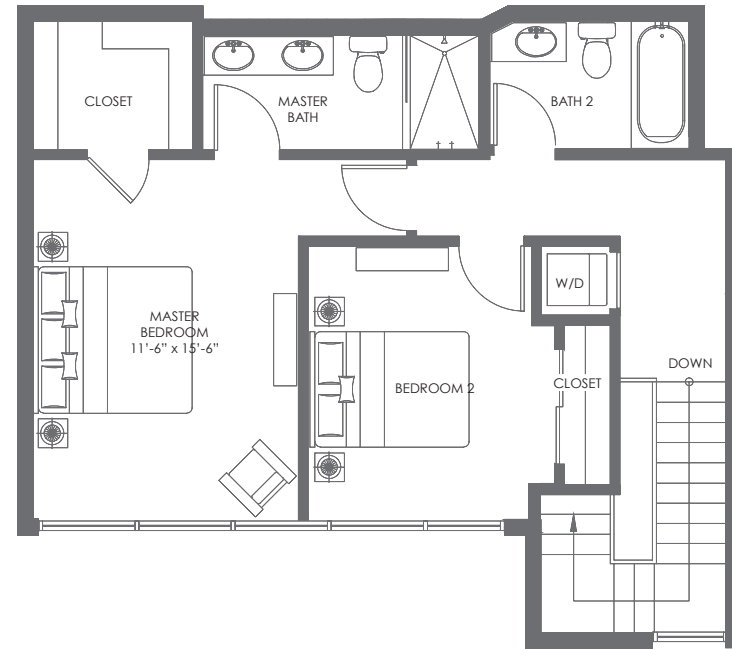
TOWNHOME
02

2 BEDROOMS / 2 1/2 BATHROOMS

1 ST FLOOR	671 S.F. (62.3 M ²)
2 ND FLOOR	1,339 S.F. (124.4 M ²)
TOTAL	2,010 S.F. (186.7 M²)



1ST FLOOR



2ND FLOOR



THE CRIMSON
WATERFRONT RESIDENCES

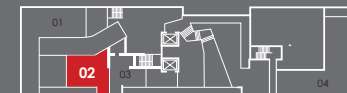
WWW.CRIMSONMIAMI.COM



TOWNHOMES



1ST FLOOR



2ND FLOOR

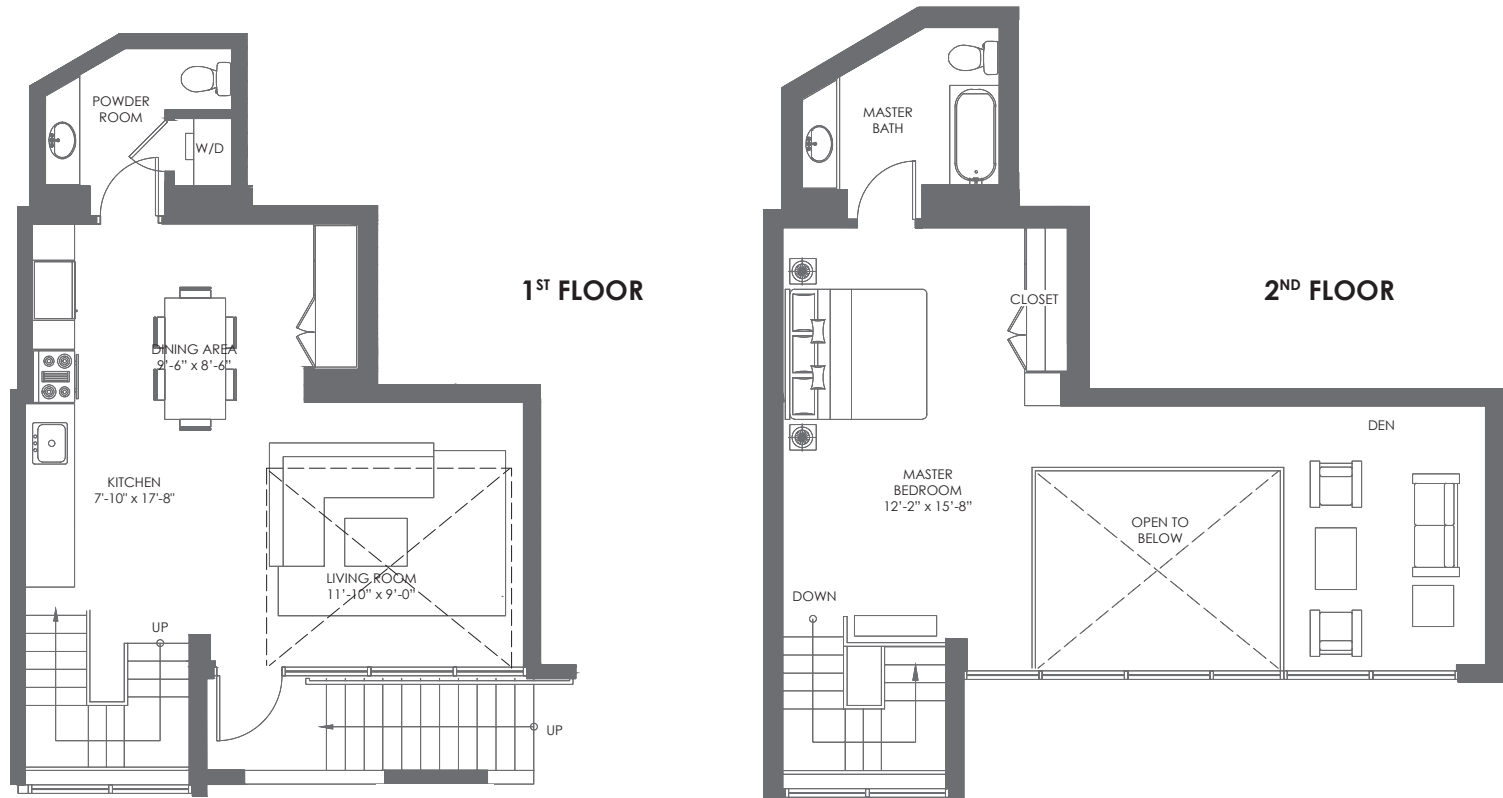
BISCAYNE
BAY

Stated dimensions are measured to the exterior boundaries of the exterior walls and the centerline of interior demising walls and in fact vary from the dimensions that would be determined by using the description and definition of the "unit" set forth in the declaration. All floor plans and development plans are approximate and subject to change.

TOWNHOME
03

1 BEDROOM + DEN / 1 1/2 BATHROOMS

1 ST FLOOR	600 S.F. (55.7 M ²)
2 ND FLOOR	732 S.F. (68 M ²)
TOTAL	1,332 S.F. (123.7 M²)



THE CRIMSON
WATERFRONT RESIDENCES

WWW.CRIMSONMIAMI.COM



TOWNHOMES



1ST FLOOR



2ND FLOOR

BISCAYNE
BAY

Stated dimensions are measured to the exterior boundaries of the exterior walls and the centerline of interior demising walls and in fact vary from the dimensions that would be determined by using the description and definition of the "unit" set forth in the declaration. All floor plans and development plans are approximate and subject to change.

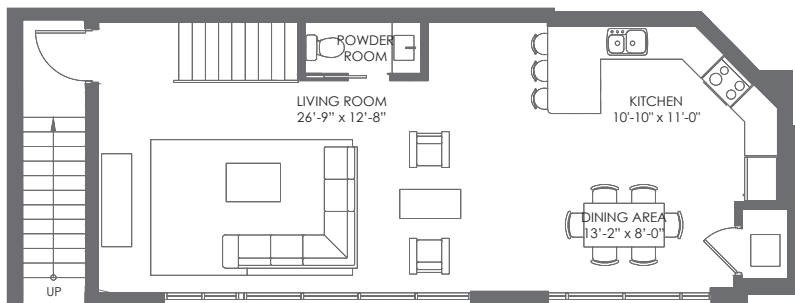
TOWNHOME
04

3 BEDROOMS + DEN / 2 1/2 BATHROOMS

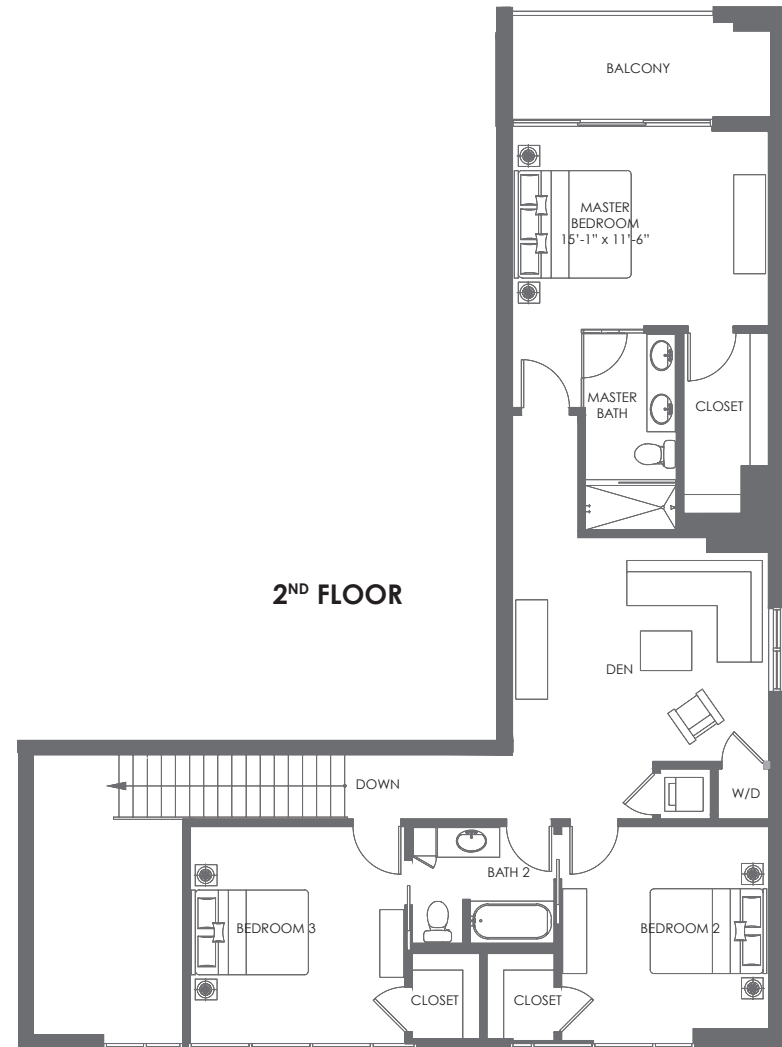
1ST FLOOR	763 S.F. (70.8 M ²)
2ND FLOOR	1,209 S.F. (112.3 M ²)
BALCONIES	100 S.F. (9.2 M ²)
TOTAL	1,972 S.F. (183.2 M ²)



1ST FLOOR



2ND FLOOR



BISCAYNE BAY



THE CRIMSON
WATERFRONT RESIDENCES

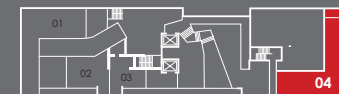
WWW.CRIMSONMIAMI.COM



TOWNHOMES



1ST FLOOR



2ND FLOOR

BISCAYNE BAY

Stated dimensions are measured to the exterior boundaries of the exterior walls and the centerline of interior demising walls and in fact vary from the dimensions that would be determined by using the description and definition of the "unit" set forth in the declaration. All floor plans and development plans are approximate and subject to change.